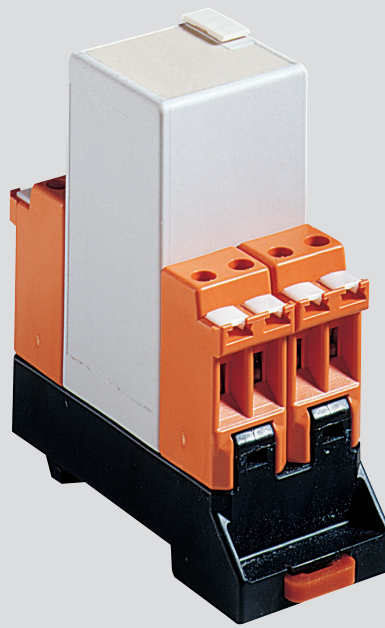


# Fuse up to 2.5 A

## Datasheet



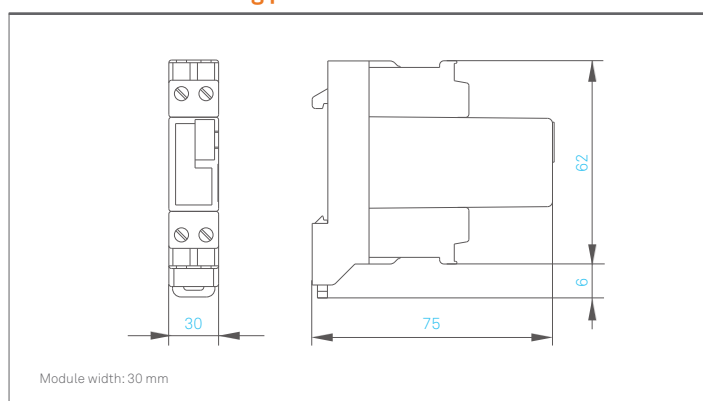
**Fused modules are required to protect equipment and power circuits in potentially explosive atmospheres.**

The increasing automation of functions and processes make it necessary to install the standard protective devices on-site. An advantage of control components is that they are fitted in explosion-protected enclosures with integrated double terminals.

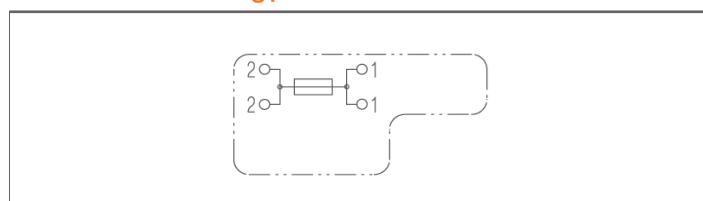
## Explosion protection

Marking ATEX	⊕ II 2G Ex db e IIC Gb ⊕ I M2 Ex db e I Mb
Certification	PTB 97 ATEX 1068 U
Marking IECEX	Ex db e IIC Gb Ex db e I Mb
Certification	IECEX PTB 11.0083U
Marking CSA	Class I, Zone 1, IIC A/Ex d e IIC Gb
Certification	CSA 2011-2484303U
Other approvals and certificates, see <a href="http://bartec.com">bartec.com</a>	

## Dimensions/mounting positions



## Dimensions/mounting positions



## Technical data

Enclosure material	High quality thermoplastic
Protection class	Module IP 66 EN/IEC 60529 Terminals IP 20 EN/IEC 60529
Terminals	2,5 mm <sup>2</sup> , fine stranded
Mounting rail	TH 35 x 7,5 (15) EN/IEC 60715
Terminal designation	written marking labels
Ambient temperature	-40 °C to +50 °C at T6
Storage temperature	-40 °C to +70 °C
Weight	0,120 kg

## Electrical data see order information

Rated voltage	250 V 500 V AC/ 400 V DC f. T2,0 A
Switching capacity	bei 250 V, 50 Hz, cos φ = 1 1000 A for (M) 1,6 A to 2,5 A 35 A for (T) 1,6 A 2,5 A 100 A (500 V AC) T 2,0 A 1500 A (400 V DC) T 2,0 A

## Order information

0	7	-	7	3	1	1	-	6	3	J	2	/	*	*	0	0
													A	B		

Complete order no. Please enter code number.

Nominal current	Code no. (A)	Characteristic	Fuse type	Code no. (B)
1,6 A	J			
2,0 A	K	medium	ESKA 521	M
2,5 A	L			
1,6 A	J		Littelfuse 218	T
2,0 A	K	time-lag	Littelfuse 477	T
2,5 A	L		Littelfuse 218	T

\*07-7311-63J2/LT00 nicht lieferbar!