

Flameproof Enclosures

TNBCD



The TNBCD range of enclosures is designed to meet the harshest of environments and are ideal for any rugged application where a potentially explosive atmosphere may be present. Our range is comprised of many standard sizes, all manufactured in 316L stainless steel providing long term corrosion resistance. The enclosures allow for the use of standard electrical components inside. Thus subsequent replacement and maintenance is easy and may be performed by skilled electricians. If required, several enclosures may be assembled on a framework with separate or common Ex e/i connection boxes. The enclosures are supplied empty with component certification or as assembled turn-key systems.

Features

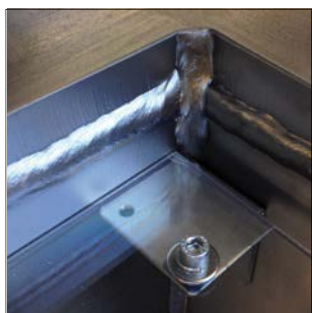
- Flexible product range with many standard sizes
- IP 66 ingress protection as standard
- Wide temperature ranges
- Flexible certification
- May be used with Ex e/i connection box
- Optional window on sides or lid
- High operational reliability
- Non invasive maintenance schedule
- Atex, IECEx and TR-CU approvals

Typical applications

- Motor starter
- Alarm panel
- Intrinsically safe circuit
- Transformer
- Charging unit
- Terminal boxes

Options

- Ex d enclosure with windows in lid or base
- Lamps or switches in lid or base, for Ex d enclosure, as well as Ex e enclosure
- Left, right hinged or without hinges, enclosures without hinges are supplied with a support below the lid



Explosion protection

Marking	Ex II 2G, II 2(1)G, II 2D and EPL Gb/Db Ex d [ib Ga][ib Gb][op is Ga] IIB T6-T4 Gb Ex tb [ia Da][ib Db] IIB T85°C - T135°C Db
Certification ATEX (Component/System)	NEMKO 03ATEX264U TÜV 12 ATEX 101309X
IECEx (Component)	IECEx NEM 10.0003U IECEx TUN 12.0014X
EAC (Component)	TC RU C- NO.Г508.B.01606
Standards	EN/IEC: 60079-0, 60079-1, 60079-31

Technical data

Material	Stainless steel 316L/CF3M
IP rating	IP 66 (IP 67 and IP 68 upon request)
Temperature	-20 °C to +40 °C optional -50 °C to +60 °C
Surface treatment	Shot blasted and acid pickled

Control and indication equipment can be fitted directly into the cover of an Ex d enclosure, or in the optional Ex e box.





Viewing window for TNBCD

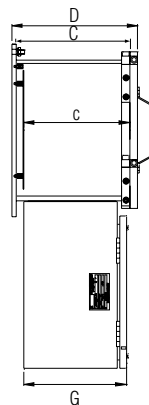
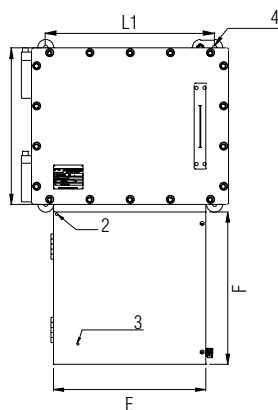
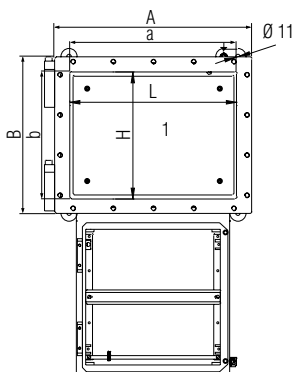
Type	view area	diameter
2526xx	136 mm x 136 mm	Ø 154 mm
3233xx	206 mm x 206 mm	Ø 154 mm
3545xx	236 mm x 336 mm	Ø 154 mm
3857xx	266 mm x 364 mm	Ø 154 mm

Measurement table for Ex d IIB Explosion proof enclosures (mm)

External dimensions						Internal dimensions				Fixing dimensions		Mounting plate	
TNBCD	Width A	Height B	Depth C	Total depth D	Window depth	Width a	Height b	Depth c	Weight (kg)	L1	H1	L	H
262531	300	290	280	312	65/100	226	216	262	49	230	290	210	196
323321	360	370	180	212	65/100	286	296	163	57	360	300	266	280
453535	490	390	320	352	65/100/154	416	316	303	94	420	390	400	296
573835	615	420	320	352	65/100/154	541	346	303	122	545	420	525	326

Other sizes upon request.

Dimensions



- 1 Mountingplate
- 2 Option: safety wire
- 3 M6 x 12 Welded stud inside door
- 4 Fixing lugs

BARTEC TECHNOR

Your partner
for safety
technology.
Challenge us!

